

# 2020 Annual Report



AVONDALE  
PRESBYTERIAN  
CHURCH





# As a congregation, God calls us to:

- Create close relationships to support a dynamic faith
- Not only serve our neighbors but know them personally
- Prepare the hearts of children and families to abide in Christ
- Reduce economic inequities by breaking down barriers to education
- Develop and demonstrate a sustaining faith







# 2020 Annual Report

## Contents

- Letter from the Pastor    page 4
- Mission & Outreach    page 7
- Stewardship    page 32
- Finance    page 34
- Membership    page 39
- Names    page 43





# Letter from the Pastor

REV. JIM EWING

Dear Avondale Family,

This month, we are having our annual Leadership Retreat where we plan and schedule different events of the church. From VBS to Advent to Fellowship programs, we look at the whole year and start thinking about how the Holy Spirit is leading us to follow Christ in our lives, in our church, and in our community.

Naturally, all of this will be done differently this year. From our virtual leadership retreat, to our mission projects, to worship, everything we embark on will be done with the safety of our folks as the first priority. After all, there are many ways to faithfully serve God and bear witness to the Good News of Jesus Christ. It may, however, look a little different than how we have done those things before.

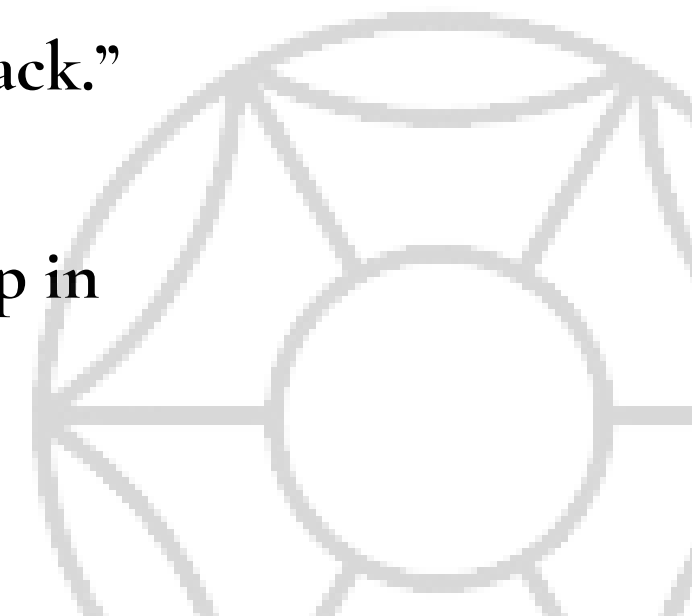


# Letter from the Pastor

Interestingly enough, in many ways, Avondale was prepared for this pandemic that changed our world. The Member Care ministry has always been able to keep our elderly and isolated members connected. Volunteers are generous in sharing their technical expertise and musical talent. Committees and staff are always thoughtful with important decisions. In fact, over the last eleven months we have done some amazing ministry at Avondale.

We have offered meaningful worship opportunities on Sunday mornings and through our Taizé services. We have offered growth opportunities through inspiring programs such as our Women's Bible Study, Confirmation class, Bible 101, 1st John study, Youth Fellowship, Next Steps group, Avondale Adventures, our Avondale Children's Center ministry, Faith and Politics Lecturer, and Racial Conversations. Our Stewardship support of this church and God's mission through Avondale has been one of the strongest we have seen with strong Work Day turnouts, Roof Above lunches, contributions for ACE (formally known as Bethlehem Center) meals and summer weekend food bags, a large group of New Members joining, and extensive care team events. Oh, and thanks to the faithful generosity of members like you, we finished the year with a fiscally responsible budget that was "in the black."

There is no question that last year had many challenges. However, we found silver linings. Sunday worship in pajamas wasn't altogether terrible. Committees collaborated on common projects. Property & Grounds





# Letter from the Pastor

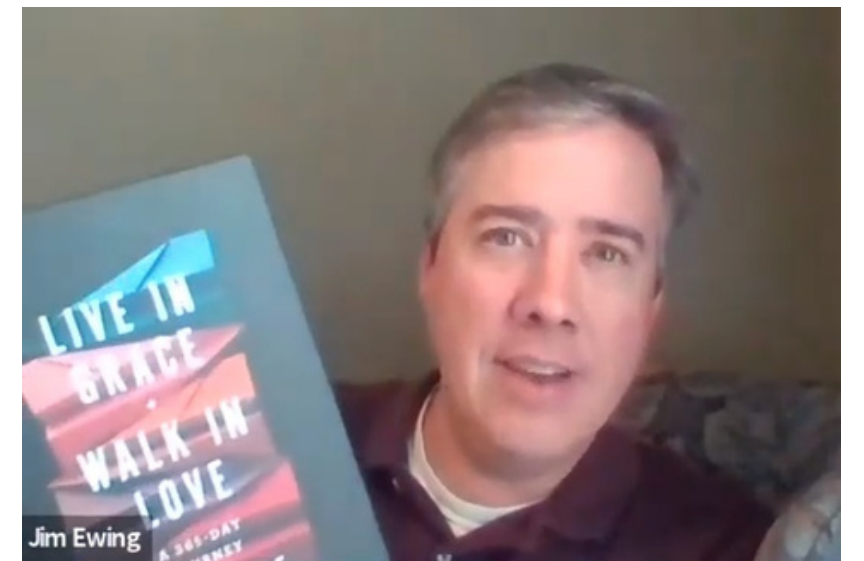
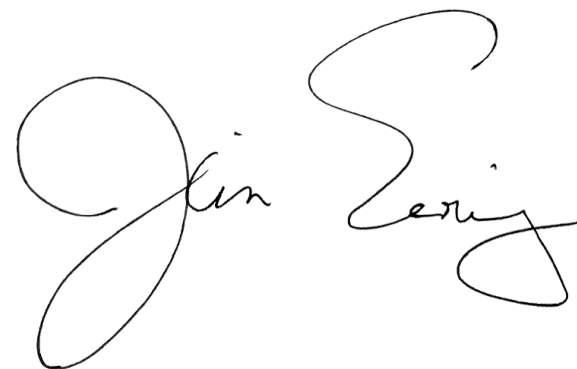
completed necessary projects while the church grounds were quiet.

And by God's grace, the hard work of our talented and dedicated Staff, the creativity of our Elders and Ministry Leaders, and the faithfulness of our Congregation have made our overall 2020 story not a tragedy, but an amazing, positive tale.

I have no doubt that if God can lead us through one of the most challenging years of our existence, then God will continue to guide us forward. With the competent, conscientious, and spiritually mature Elders and Ministry Leaders who are leading Avondale, I am confident that the next year will be another productive and meaningful year in Avondale's ministry.

Thank you for taking the time to read over this report and for learning more about this wonderful church. May the information you find within be illuminating and affirming as we pray for the time when we can be together again. Until then, may God's grace and peace be with you.

Faithfully Yours,  
Rev. Jim Ewing







# Mission & Outreach







# Mission & Outreach

*As in all other areas of our church's life, the pandemic required a change in focus for Avondale's mission efforts, to ensure safety for both our members and those we serve.*

*Despite these challenges,  
we found new ways to love our neighbors*

*as ourselves. We provided essential services  
to children served by the ACE ministry,  
fed our homeless neighbors served by Roof Above,  
and provided financial assistance to the neediest  
among us in the United States and around the world.*

*– Rich Worf, Elder*







# FAITH

*Develop and demonstrate  
a sustaining faith*

*Arondale*  
PRESBYTERIAN CHURCH



# Mission & Outreach

- Avondale held the Installation Service for Rev. Jim Ewing on February 23, 2020; it was a joyous day
- an Ash Wednesday service was held in our Sanctuary and an educational “Burning of the Palms” service for our children was held in the courtyard
- beginning March 15, Sunday worship moved online for the remainder of the year
- Avondale established an online worship presence and reached people beyond the walls of our Family Life Center
- in addition to Sunday worship services, other services shared online during the year included: Maundy Thursday Taizé; Christmas Eve; Christmas Day; and monthly Taizé Prayer Services





# Mission & Outreach

- in May, Avondale youth led the annual Youth Sunday worship service
- included with Sunday worship services, staff created special videos to share the work of the church
- on World Communion Sunday in October, drop-in communion using pre-packaged communion sets was held in the Sacred Garden with approximately 50 people served
- an in-person "Prayer Service for Unity & Reconciliation" was held in the Sacred Garden after the fall elections with approximately 15 attendees; prayers for unity were also shared electronically
- Christian Nurture classes transitioned to online, offering 5 small group studies to the congregation and beyond
- a weekday Morning Devotional was begun offering a time to join live in fellowship or watch/listen later online







# RELATIONSHIPS

*Create close  
relationships to support  
a dynamic faith*

*Avondale*  
PRESBYTERIAN CHURCH



# Mission & Outreach

- a reception with over 100 people gathered, with food and a nursery provided, was a special time in February for a celebration of Rev. Jim Ewing's installation
- 29 women of the church went to Montreat for a weekend of rest and "The Gift of Encouragement," prior to coronavirus stay-at-home orders
- "Faithful Friends" were faithfully served throughout the year with cards, calls, meals and more by ASAP
- a Family Fall Festival with outdoor picnics, live entertainment, and pumpkin painting for kids was held with safety in mind, 40-50 came for the outdoor lawn event







# Mission & Outreach

- our Women's Bible Study group held 3 different studies online, with 15-25 participants each, providing spiritual nourishment and fellowship for Avondalers and friends; the studies were:

"Anxious for Nothing" by Max Lucado; "Sermon on the Mount" by Jen Wilkin; and "Jonah" by Amanda Shanks

- as our country experienced a tumultuous presidential election during a pandemic, Avondale's messages and "Prayer Service for Unity & Reconciliation" shared hope

- at Christmas time, Avondale hosted an outdoor event on 4 Sundays, one of the few community events of the season shared in Charlotte (see Advent pages)



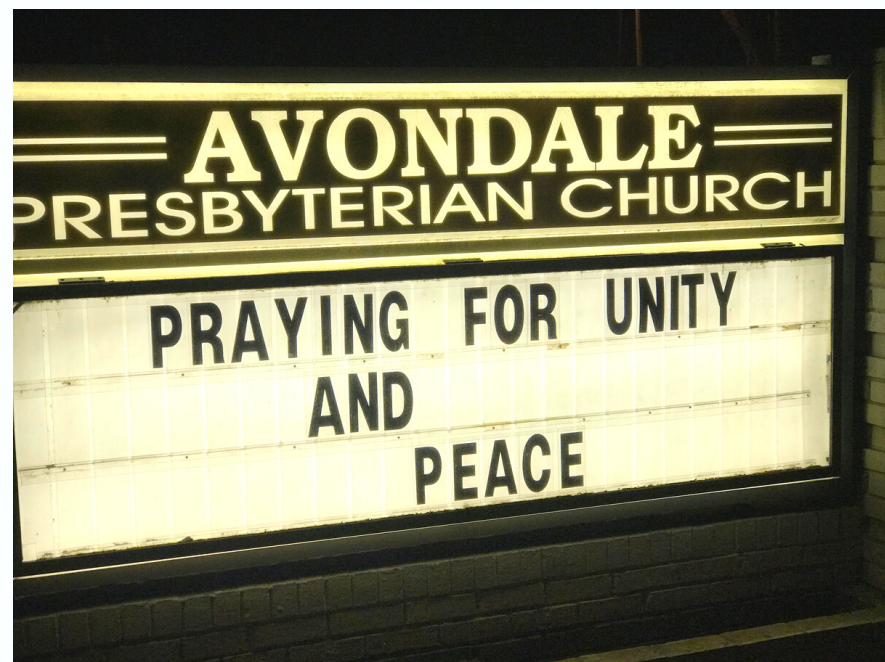


## NEIGHBORS

*Not only serve  
our neighbors but  
know them personally*

*Arondale*  
PRESBYTERIAN CHURCH





# Mission & Outreach

- as voices from our community and nation spoke out in protest of racism, Avondale also spoke up -

“We feel outrage, grief, disgust and remorse. We stand with you in horror, lament and weariness. We're fed up. It's time.....

As people of faith, one of the ways that we love our neighbor is to be in conversation with them.....

We confess our complicity, inertia and timidity. We own our responsibility right now. With God's help, we will change ourselves. With you, we'll change our institutions and our community."

-Charlotte Clergy and Community Leaders

- resources were shared about racial equity and talking with children about race as “Black Lives Matter” protests and riots occurred around the country
- Sacred Garden, a tranquil space open to our neighbors and the community, had updates to the plants and trees; 2 property work days were held as many hands pitched-in to care for the campus
- Columbarium in the Sacred Garden had updates and needed maintenance





# Mission & Outreach

- Room In The Inn, a program giving shelter to homeless neighbors, was held December 2019 to early March 2020; during our 21st year of Room In The Inn, Avondale:

- helped over 180 homeless neighbors
- hosted 16 nights of shelter, facilities, food and fellowship
- hosted an emergency night on the Dr. Martin Luther King Jr. holiday, one of winter's coldest days
- marked over 192 nights of shelter to individuals
- program was cut short 2 weeks due to the pandemic

- ACE ministry serves local families by providing a safe space for an out-of-school time youth program, meals, and additional services to their families (see ACE Ministry pages)

- 14 new families were welcomed to the Avondale Children's Center (ACC) and church grounds

- ACC children created cards and pictures for area nursing home residents

- 30+ members and friends who are no longer mobile were not forgotten by Member Care and ASAP (Avondale Senior Adult Program) during the pandemic





# Mission & Outreach

- Trunk-or-Treating event held for children
- \$1,805 contributed to Ten Cents-A-Meal, a program to help reduce hunger and relieve suffering
- \$892 contributed to One Great Hour of Sharing, a program providing people with safety, sustenance, and hope
- “Next Steps” class went virtual; 10 people participated in two sessions learning about the church, membership at Avondale, and the denomination
- 12 new members were welcomed to Avondale in December 2020
- 2nd annual Christmas Marketplace was held, sharing opportunities to shop online with local artisans over 4 weeks with a drive-through pick-up
- Advent Walk was one of our few in-person ways to connect with our Avondale family, greet new people, and share faith stories
- 2020-21 season of Room In The Inn was cancelled due to the pandemic; Avondale found new ways to partner with Roof Above to serve our neighbors

## Welcome New Members to Avondale

We're so excited to welcome twelve new members to Avondale this winter. Some of them have long been familiar faces around Avondale and some found us during the pandemic. We rejoice that God has led them here! It reminds us that although so much seems to be on hold, God's work continues in this congregation and all around us.

**Rebecca and David Klepser** know Avondale well. Their sons Owen and Drew are in Youth Group. They joined the church the same day Owen was confirmed. They enjoy tennis, running, and traveling.

**Katy and Steve Hill** began attending Avondale a few months before the pandemic hit. They got engaged in June and married in November with Rev. Ewing officiating. Katy is a runner and reader and Steve is an avid golfer.

**Abbey He** got to know Avondale through her sons' (Liam and Tristan) participation in Youth Group. She's helped with Avondale's Room In The Inn and is completing her studies to be a paralegal. She took up swimming as an adult and challenged herself to complete a 2.4 mile open water swim in Charleston.

**Brielle Stephenson** found Avondale during the pandemic. She's expecting twins in April and enjoys traveling, working out, eating and reading. She's a digital marketing manager.

**Carrie Ewing** came to Avondale from Pinehurst with her husband Rev. Jim Ewing and two children, Emma Grace and James. She loves British history and traveling. She used to travel the Southeast as an admissions officer for St. Andrews.

**Lee and Ed Ballard** are the parents of Lynn Wilkerson. They've been visiting Avondale for years and chose to become members when they moved to Charlotte recently. They've got a lot of curiosity and are quick to strike up a conversation.

**Dana Hayes** connected with Avondale through the Women's Bible Study in September. She's expecting a baby this spring. *(not pictured)*

**Betsy and Rick Shanks** were members of Avondale many years ago before moving away from North Carolina. Their sons Eric and Corey Shanks grew up in the church. Betsy and Rick recently moved back to Charlotte and have been quick to get involved in Avondale again.

Many of our new members attended the Christmas Marketplace in December. That class held in March and was a great opportunity for members to meet and greet each other on the street.



Rebecca & David Klepser & sons Owen & Drew



Steve & Katy Hill



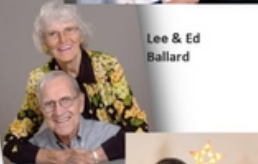
Abbey He



Brielle Stephenson



Carrie Ewing & family



Lee & Ed Ballard



Betsy & Rick Shanks







## *CHILDREN & FAMILIES*

*Prepare the hearts  
of children and families  
to abide in Christ*

*Avondale*  
PRESBYTERIAN CHURCH



# Mission & Outreach

- 15 total weeks of Avondale Adventures for our preschool and elementary families sharing fun, learning, and food
- Avondale Adventures giving overview:
  - Butterfly Fund proceeds to “Showing Our Love Through Action” mission project
  - donated \$523 for food for families in our community affected by the pandemic
  - donated Balls & Books for a refugee family
  - purchased and contributed via PCUSA for families abroad in need: chickens for 2 families, 10 Jerry Cans to transport water, and 1 fishing net
- distributed 19 Bibles to our 3 year old and 3rd grade children





# Mission & Outreach

- provided a free online Vacation Bible School (VBS) program with fun videos and take-home craft bags full of activities, materials, and snacks
- 98 children served through our VBS summer camp
- Youth Group, for grades 6th through 12th, was held virtually and in-person (see Youth page)
- mentors and youth participated in a Confirmation class
- "Children's Moment" was shared each Sunday in the worship bulletin email, providing families a weekly Bible lesson and activity





# Mission & Outreach

## YOUTH GROUP

- welcomed 4 6th graders to Youth Group
- celebrated 7 youth graduating from high school, said "Godspeed" as they headed to college
- Youth Group participated in 4 community service projects
- Confirmation class was held, 8 youth were confirmed
- Youth Group furnished the home of a refugee family, completing a mission project begun late 2019
- Youth Group raised \$3,152 in their BBQ and Holiday Greenery Sale for international mission trip
- "A Journey from Doubt to Hope" was the theme of the Youth Sunday service youth planned, created and led
- a summer trip included fellowship and fun, service projects and a time to dive deeper into learning about homelessness







# Mission & Outreach

## AVONDALE CHILDREN'S CENTER

In 2020, the Avondale Children's Center:

- cared for 78 children from 8 weeks to 5 years old
- served 61 families
- employed 19 staff
- worked to entertain, engage, enrich, and educate every child
- served nutritious hot lunches and two fresh snacks daily
- learned about COVID-19 health and safety practices
- implemented protective measures
- learned new ways to teach the children to keep them safe
- began participating in the Child Care Resources subsidy program





## *ECONOMIC*

*Reduce economic inequities  
by breaking down barriers  
to education*



# Mission & Outreach

- 3 phases of technology upgrades were made to better serve our members and ministry programs
- hosted the ACE youth program on campus for the 4th year (see ACE Ministry pages)
- collected school supplies for families in need
- sponsored 2 youth to go to summer camp
- a subsidy program to enable children from low-income families to have equal access to quality early learning programs was implemented with the Avondale Children's Center (see ACC page)





# Mission & Outreach

- 350 lunches provided for working, homeless men through Roof Above (70 men; 5 sessions)
- \$875 was donated to Roof Above by ASAP
- collected needed items for Roof Above's wish list
- Roof Above was an Advent Mission project beneficiary
- food drive for Second Harvest Food Bank
- gleaned a farm to salvage fresh produce for the hungry
- 3 guest speakers addressed economic inequities, Rev. Veronica Cannon and Dr. Rev. Jerry Cannon spoke on Racism, Meredith Potter spoke on Faith and Politics



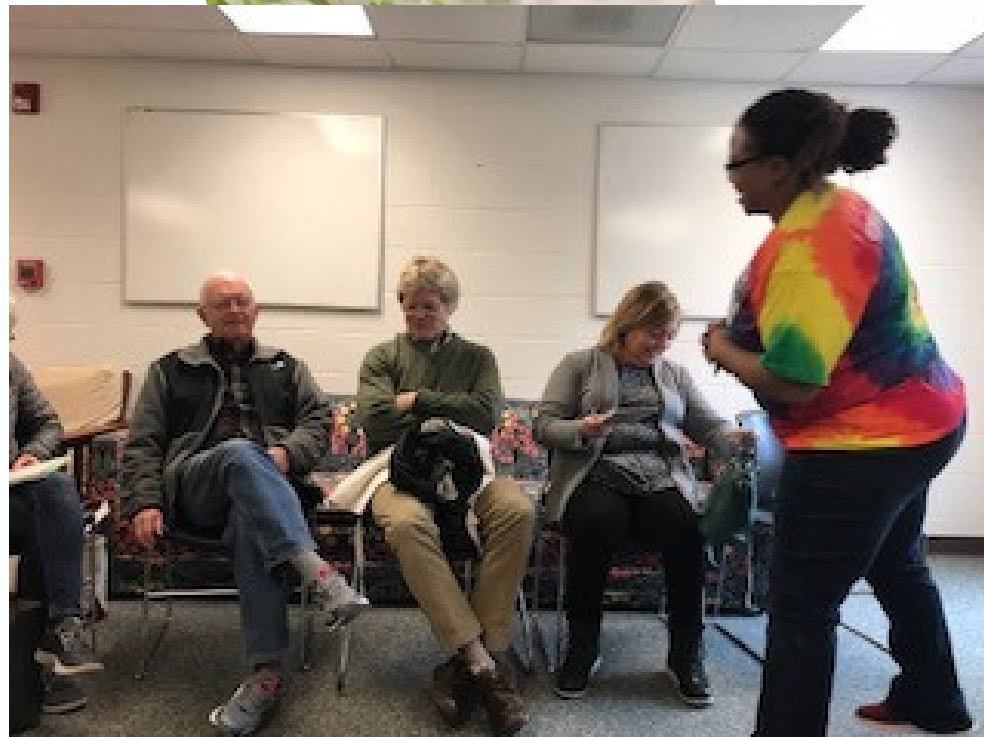


# Mission & Outreach

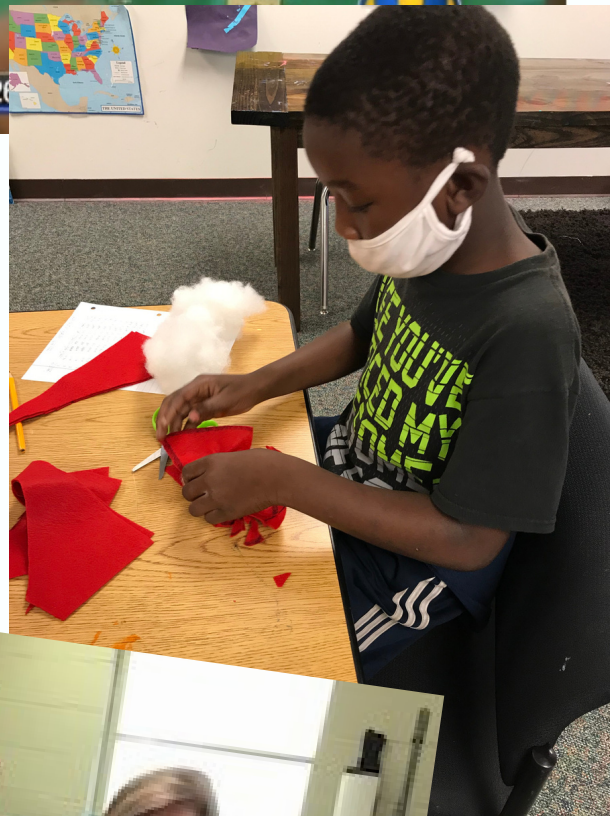
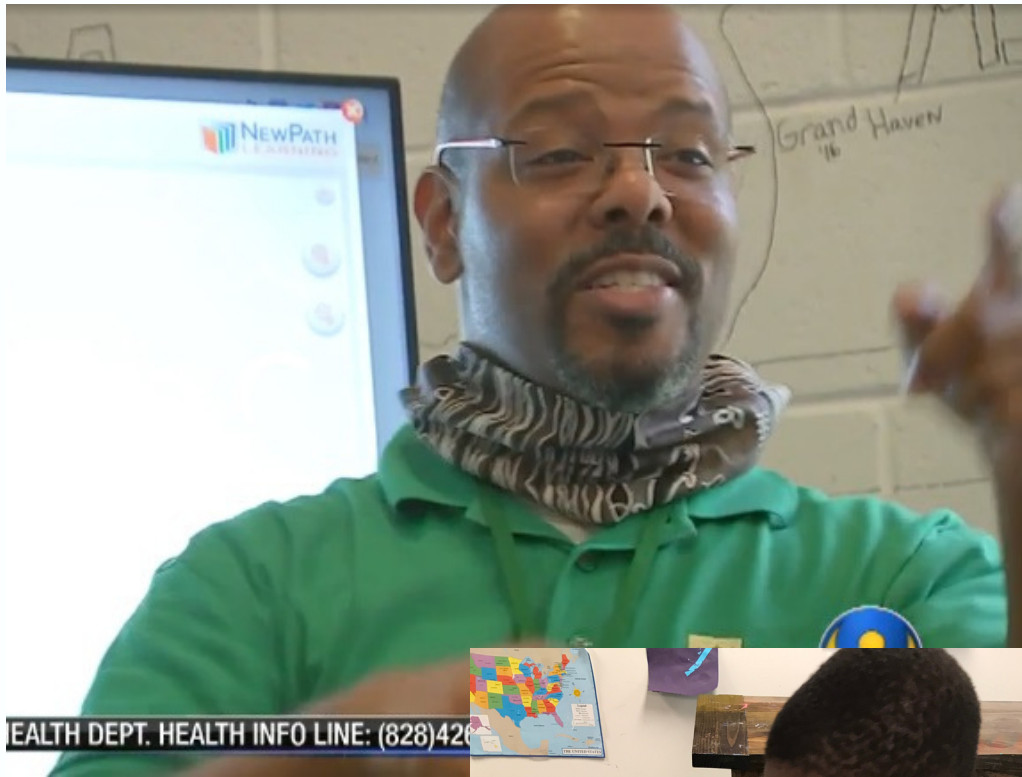
## ACE MINISTRY

The ABC Ministry (Avondale - Bethlehem Center of Charlotte) is now Avondale-ACE (Avondale - Alliance Center for Education) following the organization's name change.

- pre-COVID shutdown, 2 Kid's Cafes were hosted in January, providing a healthy hot dinner for the entire ACE program at Avondale (30+ students and staff)
- COVID-19 did not shut down the ACE partnership as we were able, and continue, to keep facilities open and safe during the pandemic
- for 10 weeks Avondale sent meal bags home with ACE students on Fridays (avg. 10 per week) and included non-perishable foods and fresh fruits, vegetables and ingredients to prepare healthy meals
- provided safe space, food and learning for children during the months when schools were shut down; beginning enrollment was 22 students meeting in-person, but dwindled to about 10 in-person attendance and some virtual attendance
- physical equipment was updated and the Family Life Center was hard-wired to improve Wi-Fi connectivity for better access to virtual classes







## ACE MINISTRY

- Avondale was the site for the ACE summer camp program for 22 in-person enrollment, plus virtual enrollment, over a period of 6 weeks
- 2 camp scholarships were awarded to 2 ACE students to attend Camp Grier for a week of fun outdoor away camp
- ACE summer campers were invited to participate in Vacation Bible School; 30 kids/families participated in the virtual program; a materials kit was provided for each participant to use from home or during ACE camp
- over \$14,400 was spent to provide the daily breakfast, lunch and snack served to ACE students during the summer program and the school year
- school supplies for ACE students were collected during the Back to School Bash Drive-Through
- Avondalers gave 25 children Christmas gifts from their wish lists, along with a warm hat and pair of gloves
- Avondalers gave 17 families \$50 gift cards for groceries and essentials at Christmastime
- an Advent mission program benefited the Avondale-ACE food budget with over \$500 generated from the Christmas Star kits
- a volunteer educational training was held in January to learn about food programs



# ADVENT & ADVENT WALK







# Mission & Outreach

## ADVENT & ADVENT WALK



Avondalers wanted to celebrate Advent in a meaningful way. With a vision to share it with the community, all the ministry teams came together to plan the season. Worship services, an Advent Walk, and mission programs provided a meaningful experience and joyous time in the life of our church.



- Advent Worship theme was “A different sort of Christmas”
- an Advent Walk was held on the 4 Sundays of Advent
- open to all, this outdoor event shared live music, Avondale greeters, prayer stations, refreshments and a campus decorated for the season
- the Advent Walk provided in-person ways to connect outdoors with our Avondale family and opportunities to greet new people and share faith stories





## ADVENT & ADVENT WALK

- the church-wide Advent Walk shared with the community a large Advent wreath set up on the labyrinth, decorated Christmas trees, mission project Christmas Stars hanging from trees throughout campus, beautiful prayers stations in the garden, mission opportunities, visits from Santa, and more
- the music was provided by our Worship Choir, Worship Band, and Handbell Choir
- our Advent Mission programs brought gifts:
  - 25 gifts for children and 17 gift cards for families of the Avondale-ACE ministry from the Angel Tree program
  - over 70 “Blessing Bags” for our neighbors of the Roof Above supportive housing program
  - over \$500 raised from the Christmas Stars for the ACE ministry to provide nutritious and warm meals to children
  - \$892 to the Christmas Joy PCUSA special offering, a program providing assistance to current/retired church workers and develops future leaders







# Stewardship

*Our Stewardship is vitally  
important to fulfill  
the ministry and mission  
vision we have  
for the church*







# Stewardship

*Raising the Consciousness  
through Moments of Grace*

- We examined the perspective of giving from a deeper place, a place beyond a sense of duty
- We embraced the understanding of Stewardship as more than a donation of dollars
- We celebrated Moments of Grace during this pandemic
- We set a goal to elevate pledge units and pledge dollar levels
- We thanked our members for their pledge commitments
- We dedicated our gifts to the work of the church on Dedication Sunday
- Our congregation exceeded our 2020 pledge goals







# Finance

*Reduce economic  
inequities by breaking  
down barriers to  
education*





# Budget

## FINANCIAL INFORMATION

	<u>2020 Actual</u>	<u>2021 Budget</u>
Contributions	\$498,498	\$507,520
Rental/Other Income	8,931	6,125
Unrealized Gains	20,962	7,500
Children's Ctr. Reimbursement	31,338	33,095
PPP Loan (Fully-Forgiven) <sup>1</sup>	109,938	0
<b>TOTAL REVENUE</b>	<b>\$669,667</b>	<b>\$554,240</b>
Personnel	\$336,360	347,130
Property	134,575	142,352
Office Supplies/Technology/Communication:	19,823	22,308
Mission	37,511	39,410
Christian Nurture	16,988	24,650
Congregational Life	1,049	5,500
Spiritual Growth	5,136	12,023
Other Expenses <sup>2</sup>	2,354	4,800
<b>TOTAL EXPENSES</b>	<b>\$553,796</b>	<b>\$598,173</b>
<b>OPERATING PROFIT (LOSS)</b>	<b>\$115,871</b>	<b>(\$43,933)</b>

<sup>1</sup>One-time funding. Further relief not expected for 2021.

<sup>2</sup>Of other expenses, the majority includes Member Care and Stewardship.



# Finance Notes

## Notes to Financial Information

As of December 31, 2020 the balance of the Vanguard Golden Anniversary Endowment account is comprised of the following:

Endowment:	\$996,891
Goodpasture Fund:	\$9,688
Columbarium Fund:	\$86,433
Facilities Fund:	\$9,631
Excess Operating Reserves:	\$199,158

Fund balances were brought to book balances in the first quarter of 2021. Excess operating funds at year end were also transferred.

In December 2020, Avondale received prepaid pledges of \$6,000 which were recorded as a Prepaid Pledge Liability. On January 1, 2021 this liability was transferred to the Member Pledge total supporting the 2021 budget.

Capital Expenditures of \$10k were budgeted in 2021 due to the Facilities Fund modest balance of \$9,631 on December 31, 2020.

With 2020 being a year of limited ministry operating spend due to COVID-19 and the increased availability of grants, the Endowment provided just \$1,081 to support Sacred Space capital expenditures allowing increased returns.



# Offerings & Denomination

<b>Denomination Support</b>	<b>\$13,560</b>
-----------------------------	-----------------

## **Special Offerings 2020:**

Ten Cents a Meal	\$1,805
------------------	---------

One Great Hour of Sharing	\$892
---------------------------	-------

Pentecost Offering <sup>1</sup>	\$409
---------------------------------	-------

Joy Gift Offering	\$1,204
-------------------	---------

Crisis Fund	\$257
-------------	-------

Installation Offering <sup>2</sup>	\$642
------------------------------------	-------

ACE Meals <sup>2</sup>	\$3,906
------------------------	---------

Easter Memorials <sup>2</sup>	\$720
-------------------------------	-------

Advent Memorials <sup>2</sup>	\$760
-------------------------------	-------

<b>TOTAL</b>	<b>\$10,595</b>
--------------	-----------------

<sup>1</sup>Portion of offering kept by congregation

<sup>2</sup>Offerings not transferred to the Presbyterian Church (U.S.A.)



# Endowment

## ***Always Avondale* Endowment Report**

Beyond what was reported in the Finance Team's Annual Report, the following is a financial summary of the accounts within the Endowment:

	<b>1/1/2020</b>	<b>12/31/2020<sup>1</sup></b>	<b>2020 Return<sup>2</sup></b>	<b>2019 Return</b>
<i>Golden Anniversary Endowment Account</i>				
	\$1,092,496	\$1,301,801	6.4%	5.5%
<i>SBM Maintenance Fund</i>				
	\$10,951	\$11,890	9.0%	6.3%
<i>Local Ministries Fund Account</i>				
	\$16,468	\$17,452	6.0%	21.8%

<sup>1</sup>Difference between book balance and fund balance at year end adjusted in following quarter

<sup>2</sup>Return calculated after removing fund transfer activity





# Membership

*Create close  
relationships  
to support a  
dynamic faith*







## BIRTH

- Mollie Rochelle Freeze  
August 9, 2020
- Terry Kent Davis



## MARRIAGE

- Steve and Katy Hill  
November 12, 2020



## IN MEMORIAM

- Lee Weigle, March 4, 2020
- Lamar Gunter, March 20, 2020
- Chip Reed, April 4, 2020
- Inez Rudisill, April 21, 2020
- Bordie McCloskey, June 2, 2020
- Tova Gunter, August 8, 2020
- Edith Gardner, December 3, 2020





## NEW MEMBERS

December 13, 2020:

- Ed and Lee Ballard
- Carrie Ewing
- Stephen and Katy Hill
- David and Rebecca Klepser

December 20, 2020:

- Dana Hayes
- Abbey He
- Rick and Betsy Shanks
- Brielle Stephenson

## YOUTH MEMBERS

December 13, 2020:

- Sophie Barron
- Gram Chambers
- Leni Patterson
- Owen Klepser

- Makayla Pride
- A. J. Schilling
- Claire Schilling
- Tommy Wray





## ADULT BAPTISM

- none



## YOUTH BAPTISM

- Grace Bearden Marren, March 8, 2020
- Evelyn Lanier Martin, August 9, 2020
- Emory Page Parks, October 7, 2020
- A. J. Schilling, December 13, 2020
- Claire Schilling, December 13, 2020





*Develop and  
demonstrate a  
sustaining faith*

# Names





# Session

Class of  
2020

- Zach Chambers, Management Gathering
- Jennifer Patterson, ACC/Discipleship Gathering
- Jackie Shannon, Worship Gathering
- Marin Blake, Worship Gathering (Youth Elder)

Class of  
2021

- Alice CuvIELlo, Worship Gathering
- Rich Worf, Mission Gathering
- Nancy Bohrer, Discipleship Gathering

Jackie  
Shannon,  
Clerk of  
Session

Class of  
2022

- Harry Greyard, Worship Gathering
- Amanda Shanks, Mission Gathering
- Tom Stout, Discipleship Gathering

Rev. Jim  
Ewing,  
Moderator



# Ministry Teams



Ministry Team	2020 Leaders	Gathering Group
Spiritual Growth	Karen Shannon Paula Huffines	Worship
Stewardship	Laura Meier Ted Todd	Worship
Mission	Trish Boyd	Mission
Outreach	Lisa Worf Pam Blake	Mission
Christian Nurture	Jessica Shanks Tony McKenzie	Discipleship
Congregational Life	Lynn Wilkerson Ruby Cathey	Discipleship
Member Care	Leslie Saleeby Susanne Anderson	Discipleship
Finance	Andrew Pavlin Matt Mitchell	Management
Personnel	Lynn Daniel	Management
Property	Corey Shanks Tim Doherty	Management





# Avondale Presbyterian Church Staff

Rev. Jim Ewing

*Senior Pastor*

Rich Stanley

*Director of Music*

Jessica Shanks

*Administrative Coordinator*

Jacqueline Howells

*Financial Coordinator*

Caroline Starnes

*Communications Coordinator*

James Higgs

*Custodian*

Dee Dee McDonald

& Cynthia Rupert

*Sunday Nursery Coordinator*

Zachary “Ziggy” Barjona

*Basketball Coordinator*



# Avondale Children's Center Staff

Merrily Watts

*Director*

Millie Norris

*Assistant Director*

Ashley Nightengale

*Chef*

Blaine Jenkins

*Sous Chef*

Debi Medlin

*Bookkeeping*

*Teachers*

Tracy Arnold

Erin Cloninger

Teresa Fox

Gail Love

Sara Myers

Tina Sanderson

Meagan Schmidt

*Teachers*

Sabine Schwieman

Jaime Sealey

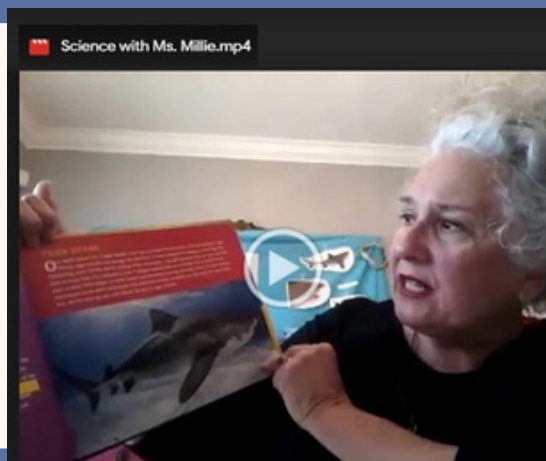
Melinda Shamblin

Cynthia Sibley

Carrie Smith

Tina Taylor

Karen Williams







Thank you for taking the time to read over  
this report and for learning more about this  
wonderful church.... we pray for the time  
when we can be together again.

Until then,

may God's grace  
and peace be  
with you.





# Avondale Presbyterian Church



2020 Annual Report  
[www.avondalepresby  
church.org/annualreport](http://www.avondalepresbychurch.org/annualreport)

2821 Park Road  
Charlotte, North Carolina 28209  
704.333.6194  
[www.avondalepresbychurch.org](http://www.avondalepresbychurch.org)

Established 1944 | Affiliated with the Presbyterian Church U.S.A.

*Avondale*  
PRESBYTERIAN CHURCH